

CEILING SYSTEMS

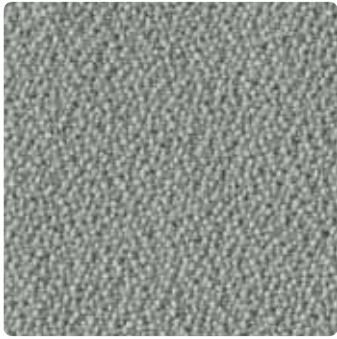
[Between us, ideas become reality.]®

FILAMENTS™
Fabric Panels

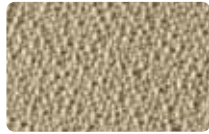


FILAMENTS Fabric Ceiling Panels

Anchorage – Standard



Slate Item 4749



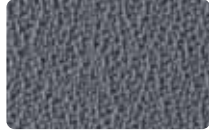
Angora
Item 4751



Goose
Item 4752



Birch
Item 4754



Wolf
Item 4750



Vanilla
Item 4753

Anchorage – Special Order Colors

Add a bit of bold! Coordinate with SOUNDSOAK® acoustical walls, FORMATIONS™ clouds and some office furniture collections for a custom look. Color coordinated grid in RAL colors and custom colors available.

Specify Special Order Items by adding color suffix to Master Item Number 4790XXX. Example: Specify 4790QUB for Special Order Item Quarry Blue.



Green Olive (GRO)



Quarry Blue (QUB)



Pumpkin (PKN)



Asteroid (ASD)



Sunshine (SUN)



Cumin (CMN)



Thistle (THL)



Raspberry (RPY)



Geranium (GER)



Straw (STW)



Eucalyptus (EUC)



Pine Needle (PIN)



Lapis (LAP)



Aubergine (AUB)



Poppy (PPY)



Graphite (GRA)



Goldenrod (GRD)



Green Apple (GAP)



Sea (SEA)



Cobalt (COB)



Mulberry (MUL)



Henna (HNA)



Onyx (ONX)



Fossil (FSL)



Amber (ABR)



Willow (WLW)



Deep Water (DWR)



Midnight (MID)



Red Delicious (RED)



Coffee Bean (COF)

Cover photo: Filaments 24" x 24" fabric panels, Special Order Color Amber (ABR) with 15/16" Prelude® and Drywall Grid.

Lido – Standard



Cape May Item 4746



Oak Bluffs
Item 4747



Huntington
Item 4748



Hermosa
Item 4745

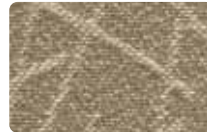
Network – Standard



Horizon Item 4760



Frost
Item 4761



Putty
Item 4763



Sunbeam
Item 4764



Powder
Item 4762

Nitro – Standard



Tonic Item 4755



Spritzer
Item 4756



Gingerale
Item 4757



Crystal
Item 4759



Cream Soda
Item 4758

Soft Look – Standard



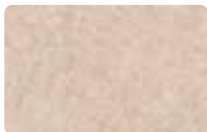
Mist Item 4713



Summer Wheat
Item 4711



Flagstone
Item 4712



Oatmeal
Item 4718



Pearl Grey
Item 4723

Grid Color Selection – Standard



White (WH)



Cream (CR)



Haze (HA)



Vanilla (VA)



Camel (CM)



Oyster (YS)



Platinum (PL)



Adobe (AD)



Silver Grey (SG)



Gun Metal
Grey (MY)



Slate (ST)



Wolf (WK)

Grid Color Selection – Special Order Colors

Select any RAL color

For coordinating RAL grid colors, refer to CS-3634 or our web site armstrong.com/ceilings. Search word: painted grid.

Custom grid colors also available. Contact your local Armstrong Sales Representative for more information.

FILAMENTS™

Fabric Panels

Recycled Content: 39-47%

Contact TechLineSM for LEED Information. 1-877-ARMSTRONG

LEED Credits						
Energy	Waste Mgmt	Recycled Content	Local Materials	Renewable Materials	Low-Emitting Materials	Daylight & Views
✓	✓	✓	✓*	✓	✓	✓

* Credit is location dependent

Key Selection Attributes

- Good sound absorption, fabric-covered square tegular panels
- InterfaceFABRIC™ made of 100% recyclable material
- Coordinates with Armstrong SOUNDISOAK Acoustical Walls, FORMATIONS Clouds and some office furniture collections

Typical Applications

- Offices/conference rooms
- Executive areas
- Waiting areas/lobbies
- Gift/specialty shops



Visual Selection

Performance Selection

Grid Face	Edge Profile	Item Number	Dimensions	Colors	Factory Mutual Certified		Fire Guard/ Fire Resist	Light Reflect	Sag Resist	VOC (Formaldehyde)	Durability
					Acoustics NRC	CAC					
FILAMENTS											
Anchorage — Additional colors available as specials. Minimum order quantity of 520 sf (Master item 4790 listed below. Color suffixes can be found inside)											
15/16"	Square Tegular	4749	2' x 2' x 3/4"	Slate	0.55	35	Class A	-	S	Low	S
		4750	2' x 2' x 3/4"	Wolf	0.55	35	Class A	-	S	Low	S
		4751	2' x 2' x 3/4"	Angora	0.55	35	Class A	-	S	Low	S
		4752	2' x 2' x 3/4"	Goose	0.55	35	Class A	-	S	Low	S
		4753	2' x 2' x 3/4"	Vanilla	0.55	35	Class A	-	S	Low	S
		4754	2' x 2' x 3/4"	Birch	0.55	35	Class A	-	S	Low	S
		4790_ _ _ *	2' x 2' x 3/4"	Special Order Colors	0.55	35	Class A	-	S	Low	S
Lido											
15/16"	Square Tegular	4745	2' x 2' x 3/4"	Hermosa	0.65	35	Class A	-	S	Low	S
		4746	2' x 2' x 3/4"	Cape May	0.65	35	Class A	-	S	Low	S
		4747	2' x 2' x 3/4"	Oak Bluffs	0.65	35	Class A	-	S	Low	S
		4748	2' x 2' x 3/4"	Huntington	0.65	35	Class A	-	S	Low	S
Network											
15/16"	Square Tegular	4760	2' x 2' x 3/4"	Horizon	0.55	35	Class A	-	S	Low	S
		4761	2' x 2' x 3/4"	Frost	0.55	35	Class A	-	S	Low	S
		4762	2' x 2' x 3/4"	Powder	0.55	35	Class A	-	S	Low	S
		4763	2' x 2' x 3/4"	Putty	0.55	35	Class A	-	S	Low	S
		4764	2' x 2' x 3/4"	Sunbeam	0.55	35	Class A	-	S	Low	S
Nitro											
15/16"	Square Tegular	4755	2' x 2' x 3/4"	Tonic	0.55	35	Class A	-	S	Low	S
		4756	2' x 2' x 3/4"	Spritzer	0.55	35	Class A	-	S	Low	S
		4757	2' x 2' x 3/4"	Gingerale	0.55	35	Class A	-	S	Low	S
		4758	2' x 2' x 3/4"	Cream Soda	0.55	35	Class A	-	S	Low	S
		4759	2' x 2' x 3/4"	Crystal	0.55	35	Class A	-	S	Low	S
Soft Look											
15/16"	Radiused Tegular	4711	2' x 2' x 7/8"	Summer Wheat	0.60	33	Class A	-	S	Low	S
		4712	2' x 2' x 7/8"	Flagstone	0.60	33	Class A	-	S	Low	S
		4713	2' x 2' x 7/8"	Mist	0.60	33	Class A	-	S	Low	S
		4718	2' x 2' x 7/8"	Oatmeal	0.60	33	Class A	-	S	Low	S
		4723	2' x 2' x 7/8"	Pearl Grey	0.60	33	Class A	-	S	Low	S

* Specify Special Order Items by adding color suffix to Master Item Number 4790. Example: Specify 4790ASD for Special Order Item Asteroid.

S = Standard

Physical Data

Material

Wet-formed mineral fiber covered with woven fabric
Soft Look items: non-woven fabric

Surface Finish

Woven fabric
Soft Look items: Needle-punched; non-woven fabric

Fire Performance

Factory Mutual approved.
Specification tested per ASTM E84 and CAN/ULC S102. Flame spread Index 25 or less. Smoke Developed Index 50 or less.

ASTM E1264 Classification

Type XI, Form 2, Pattern Z (Woven fabric finish, Soft Look - nonwoven)

Low Formaldehyde

Low Formaldehyde - contributing less than 13.5 ppb in typical conditions per ASHRAE Standard 62, "Ventilation for Acceptable Indoor Air Quality," California Code Title 24, and other building types in CHPS Section 01350.

Insulation Value

R Factor - 1.4 (BTU units)
R Factor - 0.24 (Watts units)
Soft Look items:
R Factor - 2.0 (BTU units)
R Factor - 0.35 (Watts units)

Backloading Recommendation

Contact TechLine for specific information

Weight; Square Feet/ Carton

1.25 lbs/SF; 40 SF/ctn Soft Look items: 0.95 lbs/SF; 40 SF/ctn

Warranty

1-year limited warranty. Details: armstrong.com/ceilings

Application Considerations

Lido, Network and Nitro fabrics are directional.

Fabric ceiling panels are dye-lotted and should be segregated by dye lot. Do not mix.

For fabric ceilings cleaning instructions see LA-297159 Filaments Installation Tip Sheet.

Recommended Suspension System

Items	Suspension System
All items	15/16" PRELUDE®

TechLineSM / 1 877 ARMSTRONG

1 877 276 7876

armstrong.com/filaments

CS-3770-108

© AWI Licensing Company, 2008 • Printed in the United States of America

